

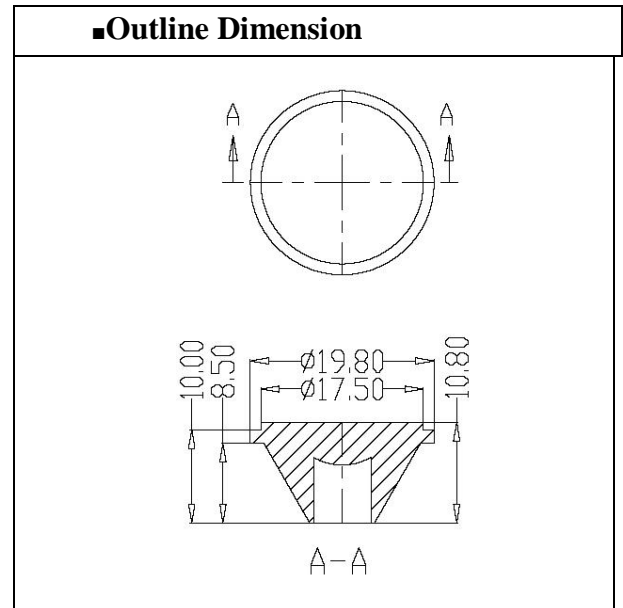
■ Features

- 30 ° focusing angle

■ Applications

- Non Long range lighting with medium area

■ Outline Dimension



■ Specification

| Item | Value |
|-------------------|------------|
| Transmittance | 93% |
| Material | PMMA |
| Standard | SGS/ROHS |
| Temperature | -35°C-90°C |
| Surface Treatment | Matt |

■ Photos



■ Beam Pattern

