

Features:

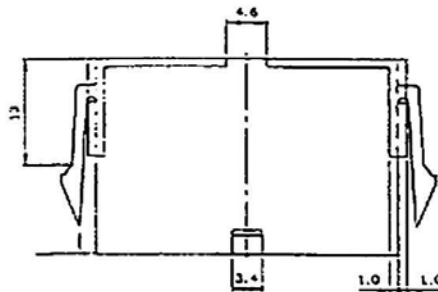
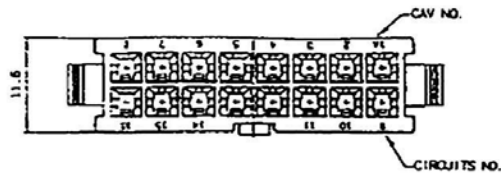
- * Available in 2 thru 24 circuit housing
- * Voltage rating 600V (R.M.S.)
- * Current rating 9 Amps per circuit

Specification:

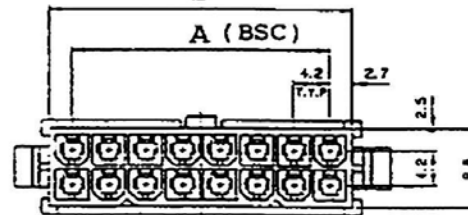
Material:
 * UL 94V-2 nylon 66

Electrical:

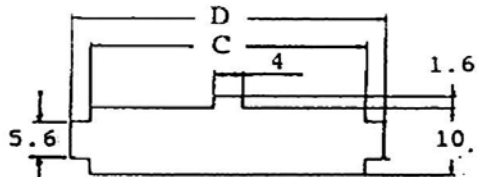
- * Voltage rating: 600V AC/DC
- * Current rating: 9A max
- * Withstanding Voltage: 1500V AC for 60 seconds
- * Insulation Resistance: 1000M ohms min
- * Temperature Rise: 30°C max
- * Storage Temperature Range: -40°C to 105°C



B (REF)



A (BSC)



Mounting Hole Details for 4259-NE Housing

Max. Panel Thickness: 2.54mm

Dimensional Information (mm)

Circuits	Dim. A	Dim. B	Dim. C	Dim. D	Circuits	Dim. A	Dim. B	Dim. C	Dim. D	Circuits	Dim. A	Dim. B	Dim. C	Dim. D
2		5.4	5.8	10.8	10	16.8	22.2	22.0	27.0	18	33.0	39.0	39.1	44.1
4	4.2	9.8	10.0	15.0	12	21.0	26.4	26.8	31.8	20	37.8	43.2	43.6	48.3
6	6.4	13.8	14.2	19.2	14	25.2	30.6	31.0	36.0	22	42.0	47.4	47.8	52.3
8	12.6	18.0	18.4	23.4	16	29.4	34.8	35.2	40.2	24	46.2	51.6	52.0	57.3

RoHS
Compliant

APPRO. 核准
 DWG 製圖 *Jolin*
 DATE 封表日 2006/06/02
 SCALE 比例 參考
 UNIT 單位 M M
 PAGE 張數 1 OF 1

TOLERANCE 容許公差
 0. +
 .00 +
 SIZE 板厚尺寸 A4
 REV 版本 A
 PART NAME 品名
 MINI FIT 4.2mm FEMALE HOUSING
 WHITE COLOR ROHS LOW-LEAD
 PART NO. 料號 5050-