

**Features:**

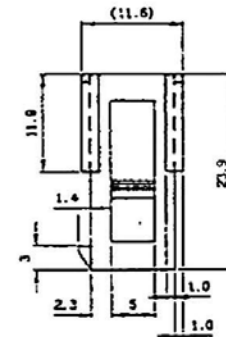
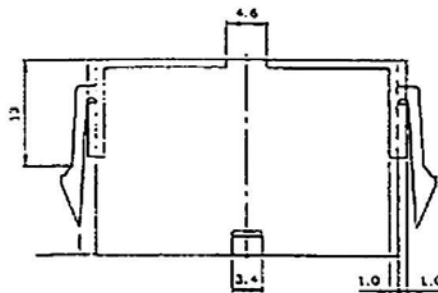
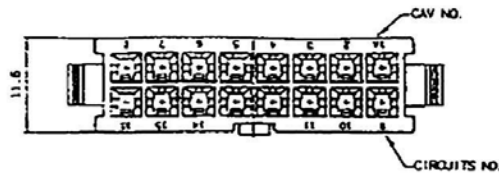
- \* Available in 2 thru 24 circuit housing
- \* Voltage rating 600V (R.M.S.)
- \* Current rating 9 Amps per circuit

**Specification:**

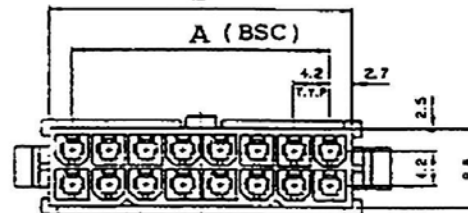
**Material:**  
 \* UL 94V-2 nylon 66

**Electrical:**

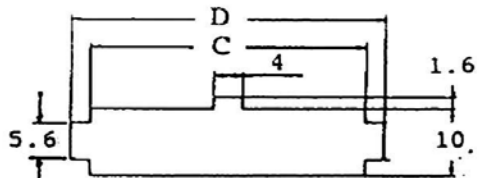
- \* Voltage rating: 600V AC/DC
- \* Current rating: 9A max
- \* Withstanding Voltage: 1500V AC for 60 seconds
- \* Insulation Resistance: 1000M ohms min
- \* Temperature Rise: 30°C max
- \* Storage Temperature Range: -40°C to 105°C



B (REF)



A (BSC)



Mounting Hole Details for 4259-NE Housing

Max. Panel Thickness: 2.54mm

**Dimensional Information (mm)**

Circuits	Dim. A	Dim. B	Dim. C	Dim. D	Circuits	Dim. A	Dim. B	Dim. C	Dim. D	Circuits	Dim. A	Dim. B	Dim. C	Dim. D
2		5.4	5.8	10.8	10	16.8	22.2	22.0	27.0	18	33.0	39.0	39.1	44.1
4	4.2	9.8	10.0	15.0	12	21.0	26.4	26.8	31.8	20	37.8	43.2	43.6	48.3
6	6.4	13.8	14.2	19.2	14	25.2	30.6	31.0	36.0	22	42.0	47.4	47.8	52.3
8	12.6	18.0	18.4	23.4	16	29.4	34.8	35.2	40.2	24	46.2	51.6	52.0	57.3

RoHS  
Compliant

APPD.  
核准

DWG  
製圖

DATE  
2006/06/02

*Jolin*

SCALE  
比例 參考

UNIT  
單位 M M

PAGE  
張數 1 OF 1

TOLERANCE  
容許公差  
0. +  
.00 +

SIZE  
紙張尺寸 A 4

REV.  
版本 A

PART NAME 品名  
MINI FIT 4.2mm FEMALE HOUSING  
WHITE COLOR ROHS LOW-LEAD

PART NO.  
料號 5050-